

STORM RESPONSE RESOURCES

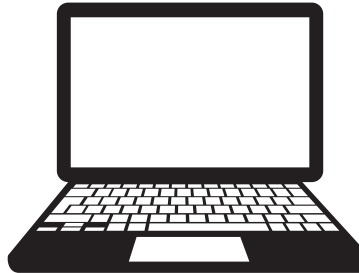


STAY INFORMED



Text Alerts

Sign up for text alert notifications:
www.hiawatha-iowa.com/alert-signup/



Website

Hiawatha-iowa.com

Facebook

City of Hiawatha. Iowa

DEBRIS PICKUP

The City of Hiawatha Public Works Department has begun picking up branches and debris throughout the City. Branches need to be cut into 12 foot lengths or less. Branches and brush must be separated from other storm debris. Debris can be placed between the curb and sidewalk within the right-of-way. Due to the amount of damage throughout the city it is optimistically estimating to take 2-3 weeks to complete curbside pick-up. More than one pass will need to be made.

For convenience and to aid in the clean-up process, five (5) locations are currently set up for Hiawatha residents and businesses to drop off storm debris-Tree/Brush only. Please follow all signage posted at these locations to dispose of branches and brush. No other storm debris will be accepted at these locations at this time.

- Guthridge Park parking lot located on North 10th Avenue
- Tucker Park parking lot on B Avenue
- Stamy Road (vacant lot on the SE corner of Metzger Drive and Stamy Road)
- 2850 Edgewood Road
- 295 Robins Road

These services are being provided to Hiawatha residents and businesses only. If you have any questions, please call City Hall at 319-393-1515 or email rjasa@hiawatha-iowa.com

GARBAGE COLLECTION

ABC Disposal Customers

Contact Directly at 319-395-0904

A-I Disposal Customers

If unable to service as scheduled due to storm they will pick up excess waste that was missed on next scheduled pick up.

Rudd Sanitation Customers

Contact directly at 319-438-6563

Waste Management Customers

If unable to service as scheduled due to storm they will pick up excess waste that was missed on next scheduled pick up.

Wilson's Rubbish Hauling Inc. Customers

Contact directly at 319-848-7101

Linn County Solid Waste Agency

Yard waste is accepted for \$24.00 per ton, with a \$5 minimum. Fees remain in place because operational costs to handle the material are the same. Retain all receipts in case you submit them for reimbursement via insurance or a disaster relief program.

Take garbage or any loads of yard waste mixed with garbage (fencing tangled tree limbs or sheds with downed trees for example) to the landfill. Regular disposal fees apply because operational costs to handle the material remain the same. Again, retain all your receipts in case you can submit them for reimbursement via insurance or a disaster relief program. Garbage is only accepted at 1954 County Home Road, north of Marion, open 7:00am - 4:00pm Monday - Friday, Saturdays by appointment only 7:00am - 12:00pm. Extra appointments have been added to Saturdays and can be scheduled online at <https://www.solidwasteagency.org/appointment-scheduling>

SHELTER

- Hiawatha Community Center is open for cooling and charging devices. Hours are 7:30A.M - 6:00PM
- The American Red Cross has opened two shelters
 - Palo Community Center at 2800 Hollenbeck Road
 - Veterans Memorial Coliseum at 50 2nd Avenue Bridge, Cedar Rapids

VOLUNTEERS

City of Hiawatha employees are compiling a list of people whom need volunteers and those whom are looking to volunteer. If you are in need or are looking to help, please call 319-393-1515. If no one is available please leave a message and a representative will return your call.

GENERATOR SAFETY

Generators should be placed at least 20 feet from your home and should never be used indoors, including in homes, garages, basements, crawl spaces and other enclosed or partially-enclosed areas, even with ventilation. This is because generators can produce high levels of colorless, odorless carbon monoxide (CO) very quickly. Opening doors and windows or using fans will not prevent CO build-up in the home. Even if you can't smell exhaust fumes, you may still be exposed to CO. If you start to feel sick, dizzy or weak while using a generator, get to fresh air right away and call 911

*Use of generators during a rainstorm is not advised.

FOOD SAFETY

Food safety is another important factor to consider when refrigeration isn't available due to power outages. Refrigerated and frozen food may not be safe to eat if the power has gone out for extended periods.

The best way to keep food safe is to keep refrigerator and freezer doors closed. If the doors stay closed, food will stay safe for:

- up to four hours in a refrigerator
- up to 48 hours in a full freezer
- up to 24 hours in a half-full freezer

Throw away perishable food in your refrigerator (meat, fish, cut fruits and vegetables, eggs, milk, and leftovers) after 4 hours without power or a cold source like dry ice. Dispose of any food with an unusual odor, color, or texture. If you have an appliance thermometer in your freezer, check to see if it is still at 40 °F or below. You can safely refreeze or cook thawed frozen food that still contains ice crystals or is at 40 °F or below.

PUBLIC SAFETY

- Do not drive around barricades. Barricades are in place for your safety.
- Keep 50 feet back from city equipment.
- Do not park your vehicle in the road while crews are working in the area providing a clear area for equipment to maneuver.

CHAINSAW SAFETY

Before using a saw, operators should ensure they are following all manufacturer recommendations for the safe operation, maintenance, and adjustment of the saw.

- Operators should wear appropriate personal protective gear including hard hat, safety glasses, hearing protection, heavy work gloves, cut-resistant legwear (chain saw chaps) that extend from the waist to the top of the foot, and boots which cover the ankle.
- Avoid working around downed power lines; even if you know them to be deenergized, as they could become energized at any time.
- If a serious injury occurs resulting in a loss of blood, apply direct pressure to the wound(s) and call 911 immediately.

TIPS FOR HIRING TREE SERVICE

- Verify the contractor is properly insured
- Always get a written estimate before work begins
- Do not pay upfront
- No permits required for tree removal / trimming services

TIPS FOR HOME REPAIRS

Before doing home repairs, verify your contractor has obtained the appropriate permits.

24/7 CHARGING STATION

Footprint Project has deployed a solar trailer to offer clean energy access for residents to charge their cellphones, tablets and laptops. Visit Hiawatha City Hall's east parking lot (101 Emmons Street) day or night to charge your devices.

EMA DAMAGE ASSESSMENT GUIDE & FORM

In our efforts to qualify for FEMA assistance, please visit <http://www.hiawatha-iowa.com/news/ema-damage-assessment-guide-form/> and complete the assessment using the criteria provided on the degree pages to determine the classification of your property. Deadline August 21, 2020.

WATER QUALITY

Water quality has not been disrupted and remains safe to drink. Contact the Water Department at 319-393-5556 with questions or concerns.

PARKS UPDATE

- Guthridge.Tucker, and the Dave Wright Family Dog Park remain closed until further notice. This includes restrooms, playgrounds, splash pads, ball diamonds, courts, etc. With the amount of debris and trees it is an unsafe place to be.
- The Hiawatha Farmers Market has been cancelled through the month of August. We will monitor cleanup and adjust dates accordingly.

ADDITIONAL RESOURCES

Disaster Case Management

- Single point of contact to help access resources
- Contact HACAP at 319-739-0056

Crisis Counseling

For 24/7 disaster crisis counseling, call Iowa Concern Hotline at 800-447-1985

Iowa Individual Disaster Assistance Grant

- Income restrictions may apply
- Each qualifying household could receive up to \$5,000
- Tips: Take photos of damage and keep all receipts
- Apply at dhs.iowa.gov/disaster-assistance-programs or contact HACAP at 319-739-0056 for more details.

United Way 211

- May be able to provide additional assistance
- To reach 211 you can
- Dial 211 on any phone or
- Text your zip code to 899211
- Visit 211iowa.org